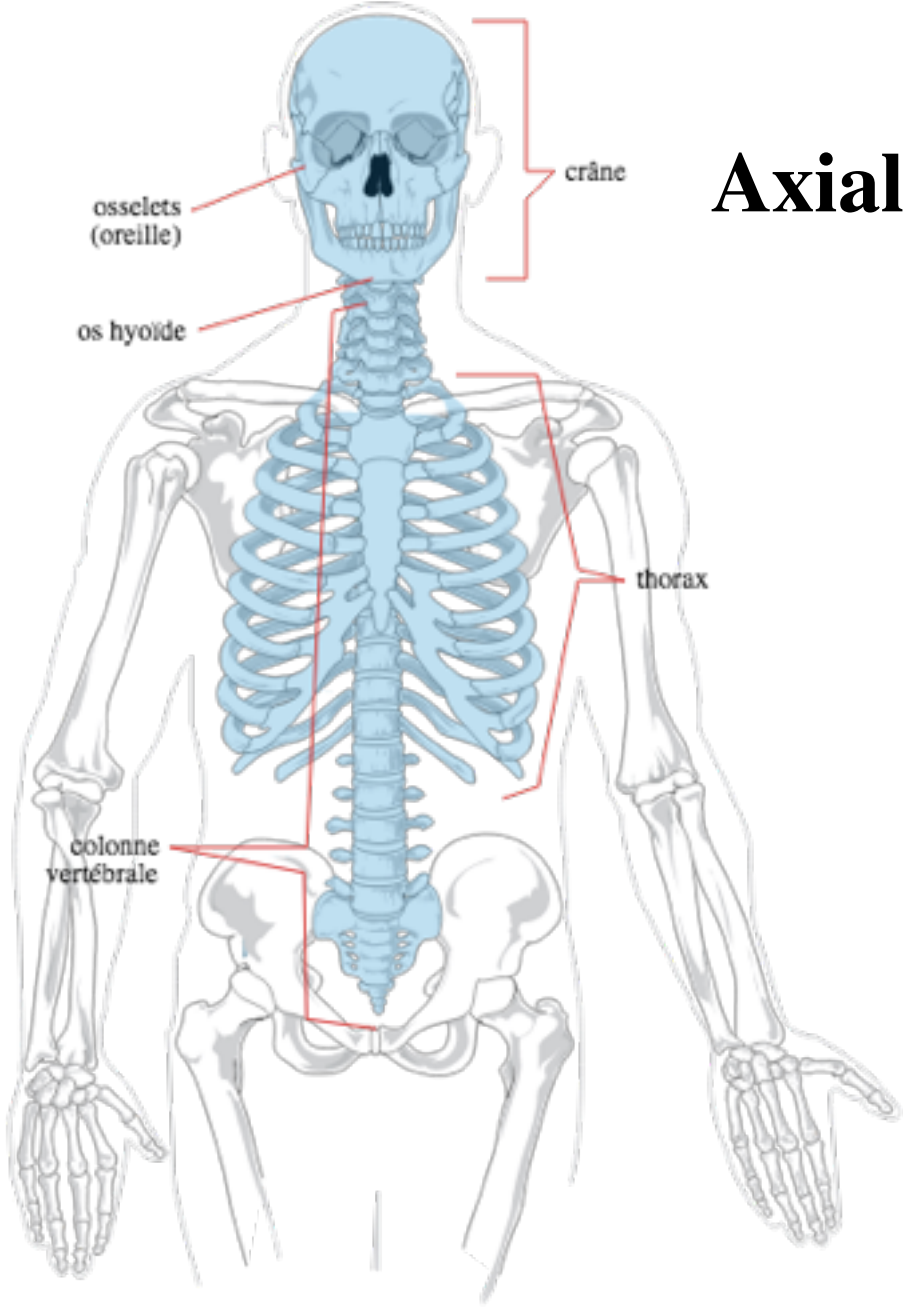


Axial Skeleton





**Atlas - no body
dens takes place of**



**Axis - Dens
(Odontoid Process)**



Figure 7-20 The Thoracic Vertebrae.



**Intervertebral
Foramen**



Figure 7-21 The Lumbar Vertebrae.





Cervical

- **7 vertebrae**
- **looks like Wylie Coyote**
- **2 extra holes (transverse foramen)**



Thoracic

- **12 vertebrae**
- **looks like Giraffe**
- **Spinous Process - long and points down**
- **Vertebral foramen - round**



Lumbar

- **5 vertebrae**
 - **looks like Moose**
 - **Spinous Process - short and stubby**
 - **Vertebral foramen - triangle**
(Spinal cord starts to branch here)
- page 183

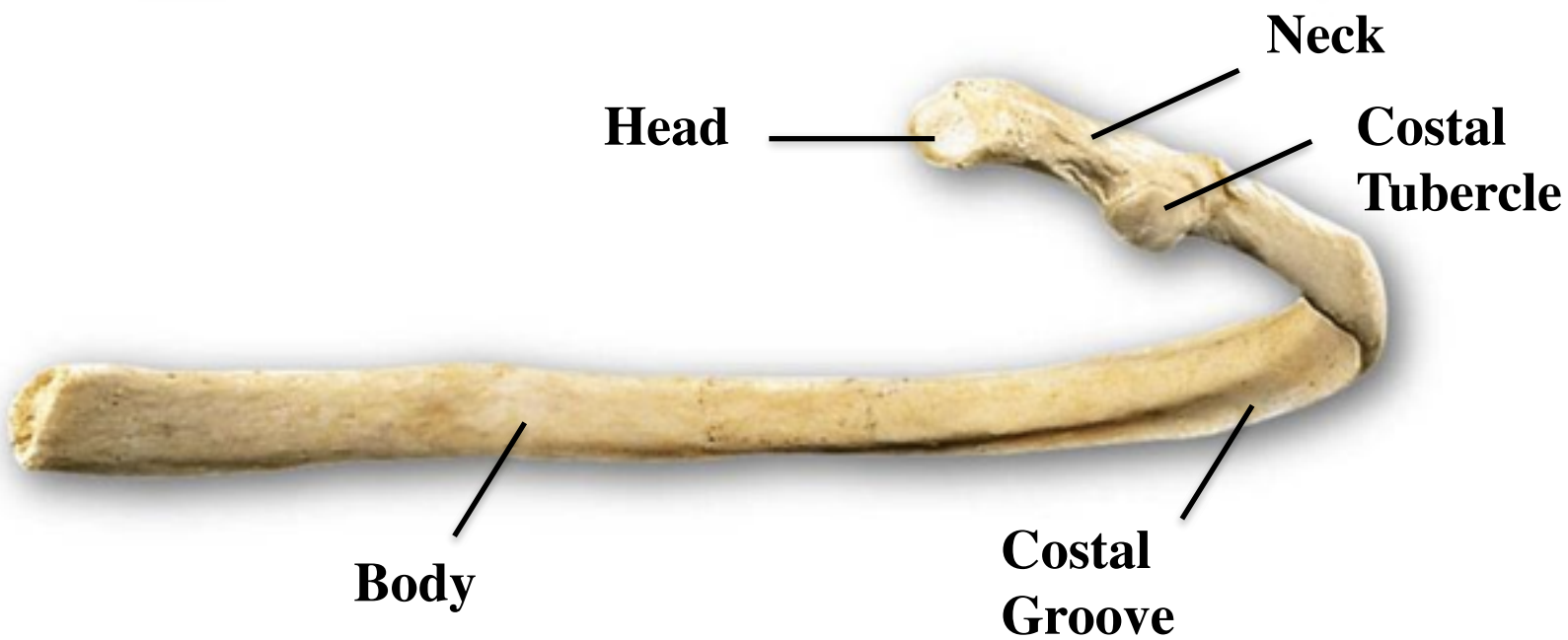


Figure 7-22 The Sacrum and Coccyx.

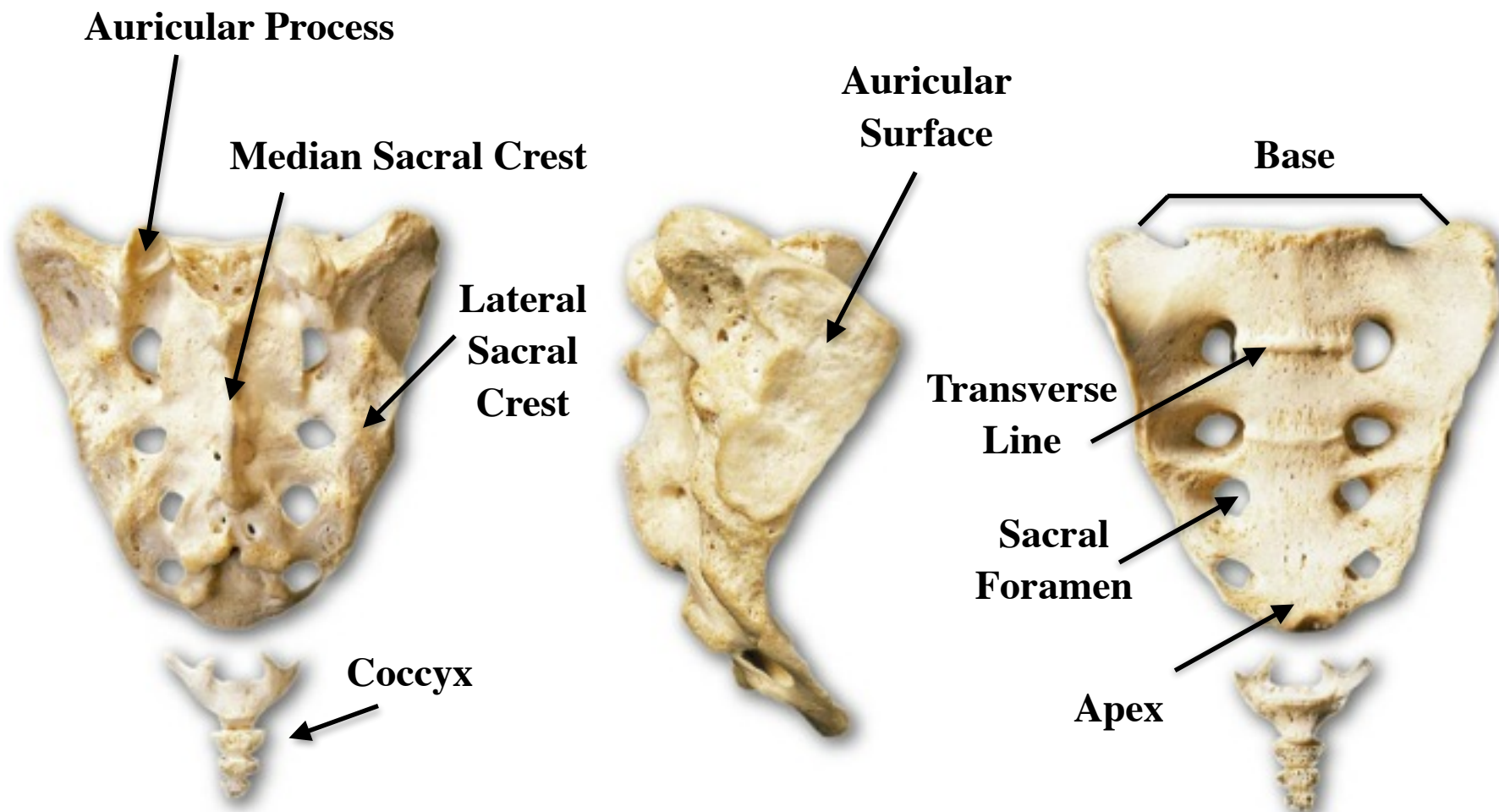


Figure 7-23a The Thoracic Cage.

